

PB, pg 2 Plat 3 of 3

PLAT TWO GREGOR WOODS

BEING A REPLAT OF A PORTION OF BLOCKS 20 & 29, PLAT OF ST. LUCIE INLET FARMS, PLAT BK. I, PG. 98 PUBLIC RECORDS OF PALM BEACH (NOW MARTIN) COUNTY FLORIDA. ALL LYING AND BEING IN THE HANSON GRANT.

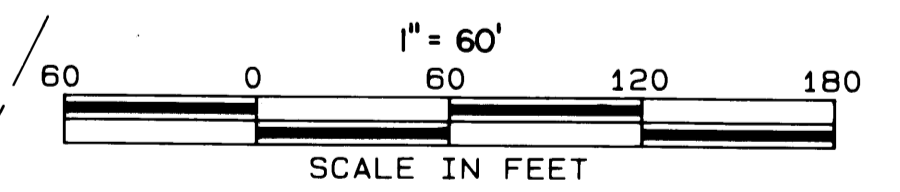
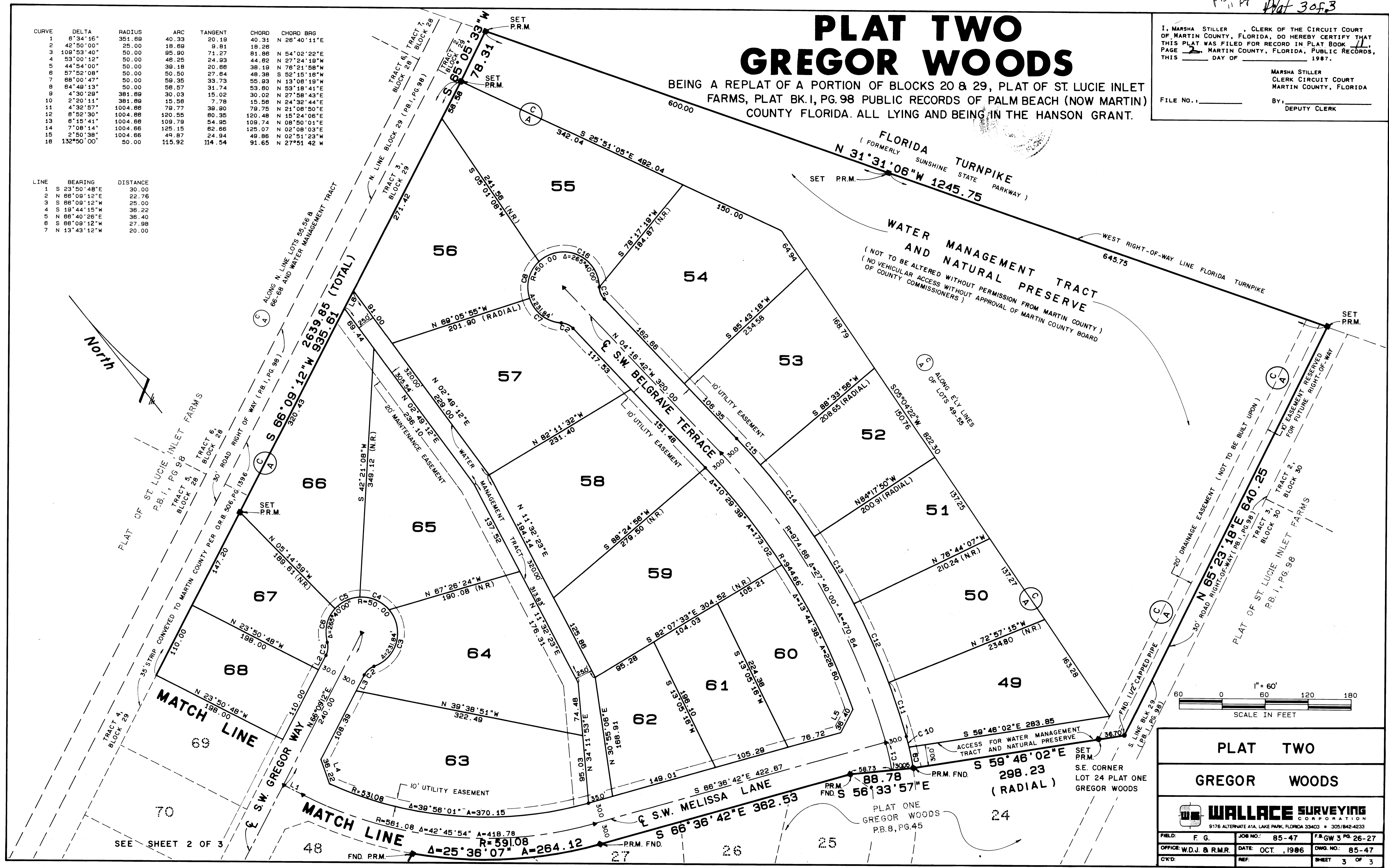
I, MARSHA STILLER, CLERK OF THE CIRCUIT COURT OF MARTIN COUNTY, FLORIDA, DO HEREBY CERTIFY THAT THIS PLAT WAS FILED FOR RECORD IN PLAT BOOK 11, PAGE 2, MARTIN COUNTY, FLORIDA, PUBLIC RECORDS, THIS _____ DAY OF _____, 1987.

MARSHA STILLER
CLERK CIRCUIT COURT
MARTIN COUNTY, FLORIDA

FILE NO. _____ BY: _____
DEPUTY CLERK

CURVE	DELTA	RADIUS	ARC	TANGENT	CHORD	CHORD BRG
1	6°34'16"	351.89	40.33	20.19	40.31	N 26°40'11"E
2	42°50'00"	25.00	18.68	9.81	18.28	
3	108°53'40"	50.00	95.90	71.27	81.86	N 54°02'22"E
4	53°00'12"	50.00	46.25	24.93	44.62	N 27°24'19"W
5	44°54'00"	50.00	39.18	20.68	38.19	N 76°21'58"W
6	57°52'08"	50.00	50.50	27.64	48.38	S 52°15'18"W
7	88°00'47"	50.00	58.57	33.73	55.93	N 13°08'19"W
8	84°48'13"	50.00	56.57	31.74	53.80	N 53°18'44"E
9	4°30'29"	381.89	30.03	15.02	30.02	N 27°58'43"E
10	2°20'11"	381.89	15.58	7.78	15.56	N 24°32'44"E
11	4°32'57"	1004.68	78.77	38.90	78.75	N 21°08'50"E
12	6°52'30"	1004.68	120.55	60.35	120.48	N 15°24'06"E
13	8°15'41"	1004.68	109.79	54.95	109.74	N 08°50'01"E
14	7°08'14"	1004.68	125.15	62.66	125.07	N 02°08'03"E
15	2°50'38"	1004.68	49.87	24.94	49.86	N 02°51'23"W
16	132°50'00"	50.00	115.92	114.54	91.65	N 27°51'42"W

LINE	BEARING	DISTANCE
1	S 23°50'48"E	30.00
2	N 68°09'12"E	22.76
3	S 66°08'12"W	25.00
4	S 19°44'15"W	36.22
5	N 66°40'26"E	36.40
6	S 66°09'12"W	27.98
7	N 13°43'12"W	20.00



PLAT TWO
GREGOR WOODS

WALLACE SURVEYING CORPORATION
9176 ALTERNATE A1A, LAKE PARK, FLORIDA 33403 • 305/842-4233

FIELD: F. G.	JOB NO.: 85-47	FR GW 3 PG 26-27
OFFICE: W.D.J. & R.M.R.	DATE: OCT, 1986	DWG. NO.: 85-47
CHK'D:	REF:	SHEET 3 OF 3

SEE SHEET 2 OF 3